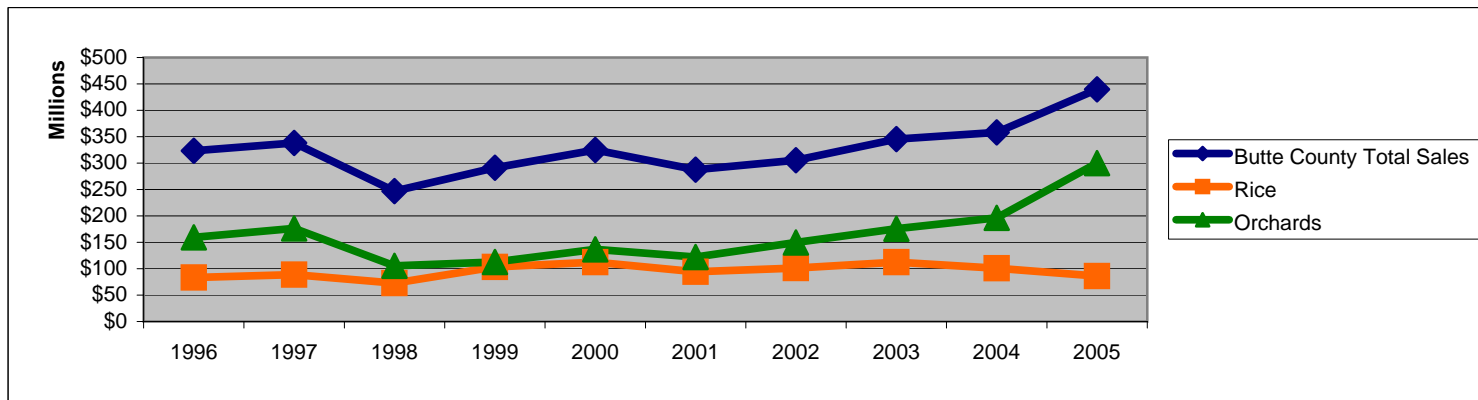


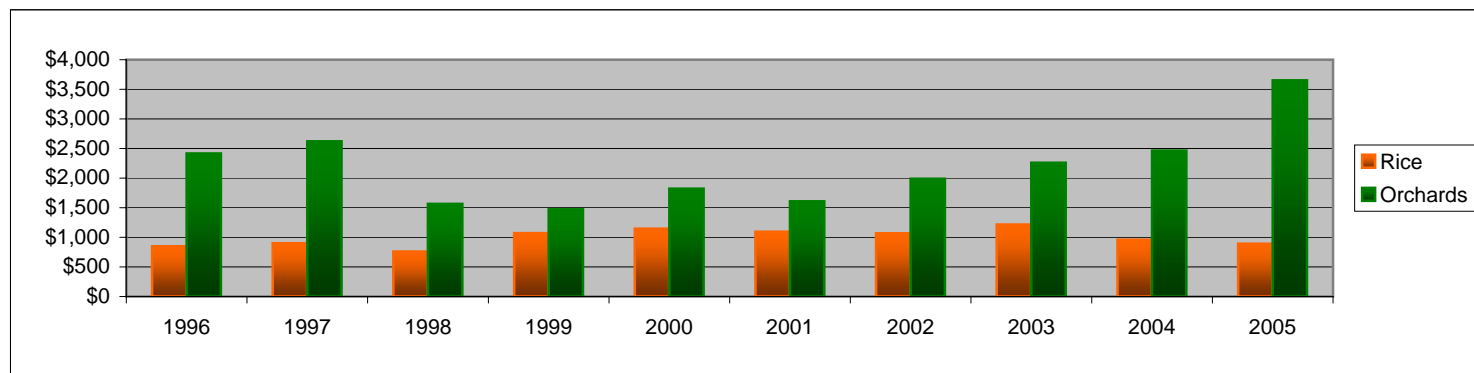
Rice and Orchard Crops Data Compared -- Butte County --1996-2005

BSBAGU 9/20/06 BDH

As shown on the graph below, while 2005 was a very good year for almond prices, it was not a total aberration. Permanent plantings are a major source of Butte County's ag income. It is also apparent that in terms of dollars earned, orchards are a very efficient use of both land and water.



Dollar return per acre of land harvested



Dollar return per acre foot of irrigation water applied.

